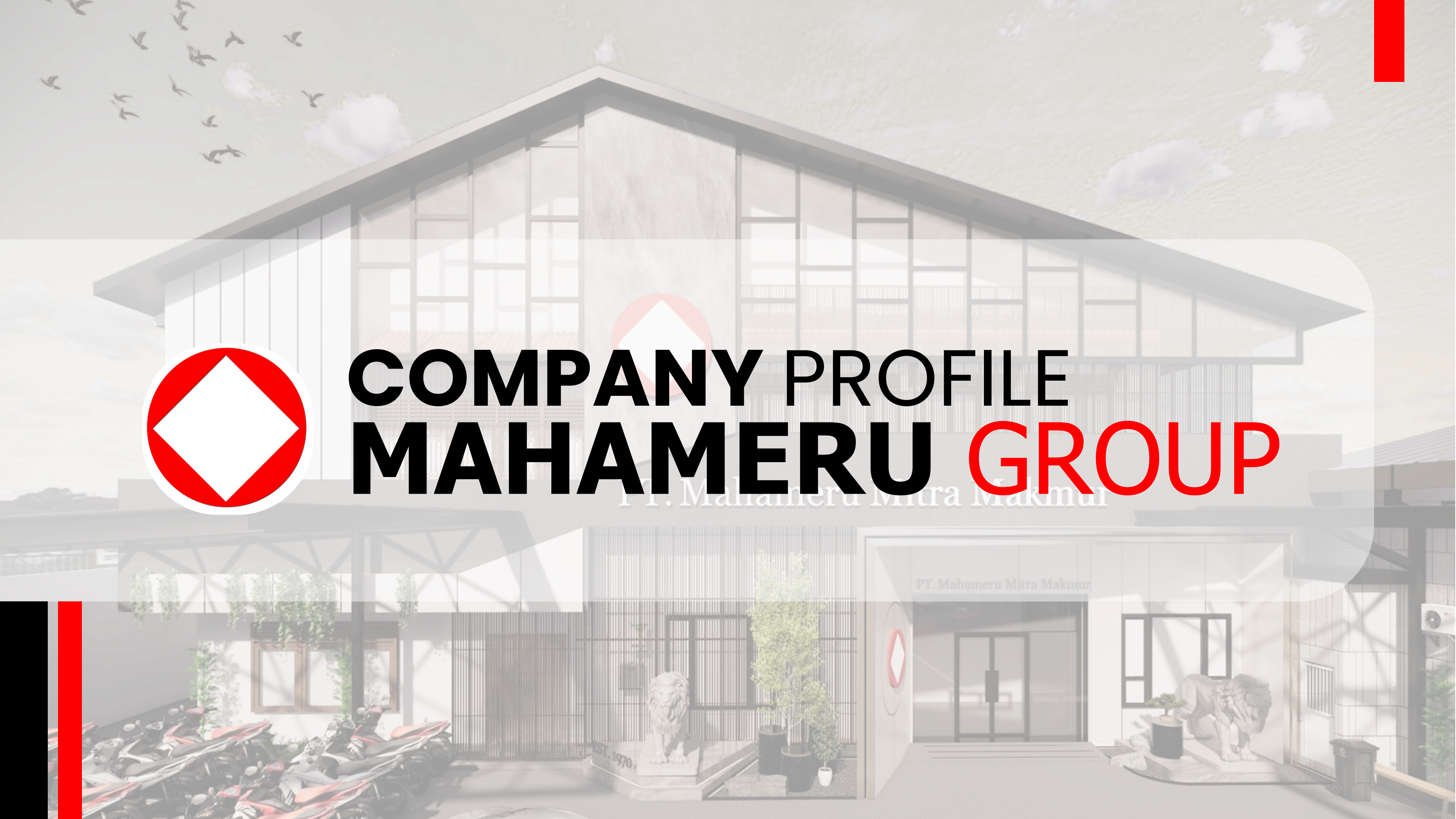


COMPANY PROFILE MAHAMERU GROUP



ABOUT US

Mahameru Group is a leading FMCG (Fast Moving Consumer Goods) distribution company specializing in food, beverage, and non-food products. With roots dating back to the 1970s, we have built long-standing partnerships with domestic and international principals.

“Our organization is supported by strong infrastructure and experienced people, we are committed to reliable distribution, excellent customer relationships, and continuous growth through innovation.”



OUR STORY: OUR JOURNEY OF **GROWTH**

"1980s"

The business gained the trust of principals and became a distributor for iconic products such as Indomie, Chiki, and Frisian Flag.

"2000s"

The company expanded its depot network across South and West Sulawesi, strengthened partnerships with new principals, and broadened its product portfolio.

"2020s"

The branch network grew to more than 20 locations, accompanied by business model transformation, stronger human capital, wider distribution coverage, and sustainable regional leadership.



"1970s"

Mahameru Group began as a small grocery store on Jl. H.S. Cokroaminoto No. 14, Pasar Sentral Makassar, under the name UD Mahameru.

"1990s"

PT Mahameru Mitra Makmur was established on January 6, 1997, marking the company's transformation into a professional distribution business.

"2010s"

PT Mahameru Putra Harmonis was established on January 3, 2013, to support expansion in Southeast Sulawesi.

OUR DIRECTORS



HENRY WITONO
President Director

Provides overall strategic direction and oversees the company's operations to support sustainable growth across Mahameru Group.



ANDREA WITONO
Director

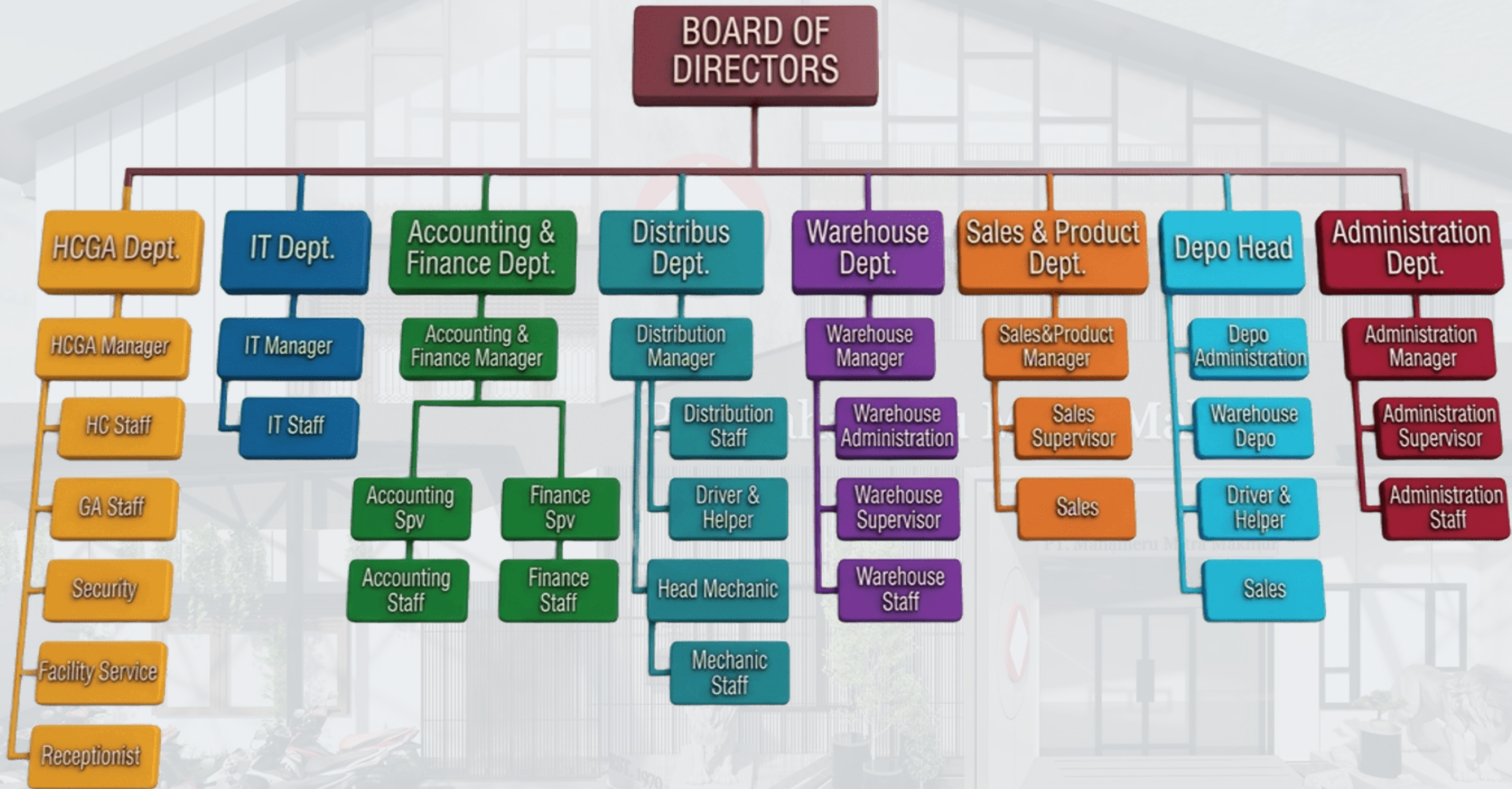
Oversees distribution operations and general affairs to support effective, reliable, and well-coordinated business activities.



SILVANA INDAH WITONO
Director

Oversees financial management and supports the company's stability through disciplined planning, control, and accountability.

STRUCTURE ORGANIZATION



OUR VISION

"To become **a leading, competitive, and trusted** FMCG (Fast Moving Consumer Goods) distribution company."



OUR MISSION

- 1** Build mutually beneficial relationships with customers through excellent service and trust.
- 2** Distribute principals' products widely, evenly, and on time across targeted regions.
- 3** Strengthen employee competence to ensure effective, efficient, and productive work processes.
- 4** Improve facilities, infrastructure, and technology to support a competitive and innovative distribution system.
- 5** Strengthen internal control to build an accountable risk management framework.
- 6** Pursue international-standard quality management systems.



OUR VALUE

"With humility as our way of life, we uphold **Respect** by honoring and valuing every individual. We conduct our business with the principle of being **Accountable** (Full Responsibility). We provide the best **Service** to all our customers. We will always remain **Adaptive**, embracing every challenge to achieve personal excellence and deliver a positive impact to others."

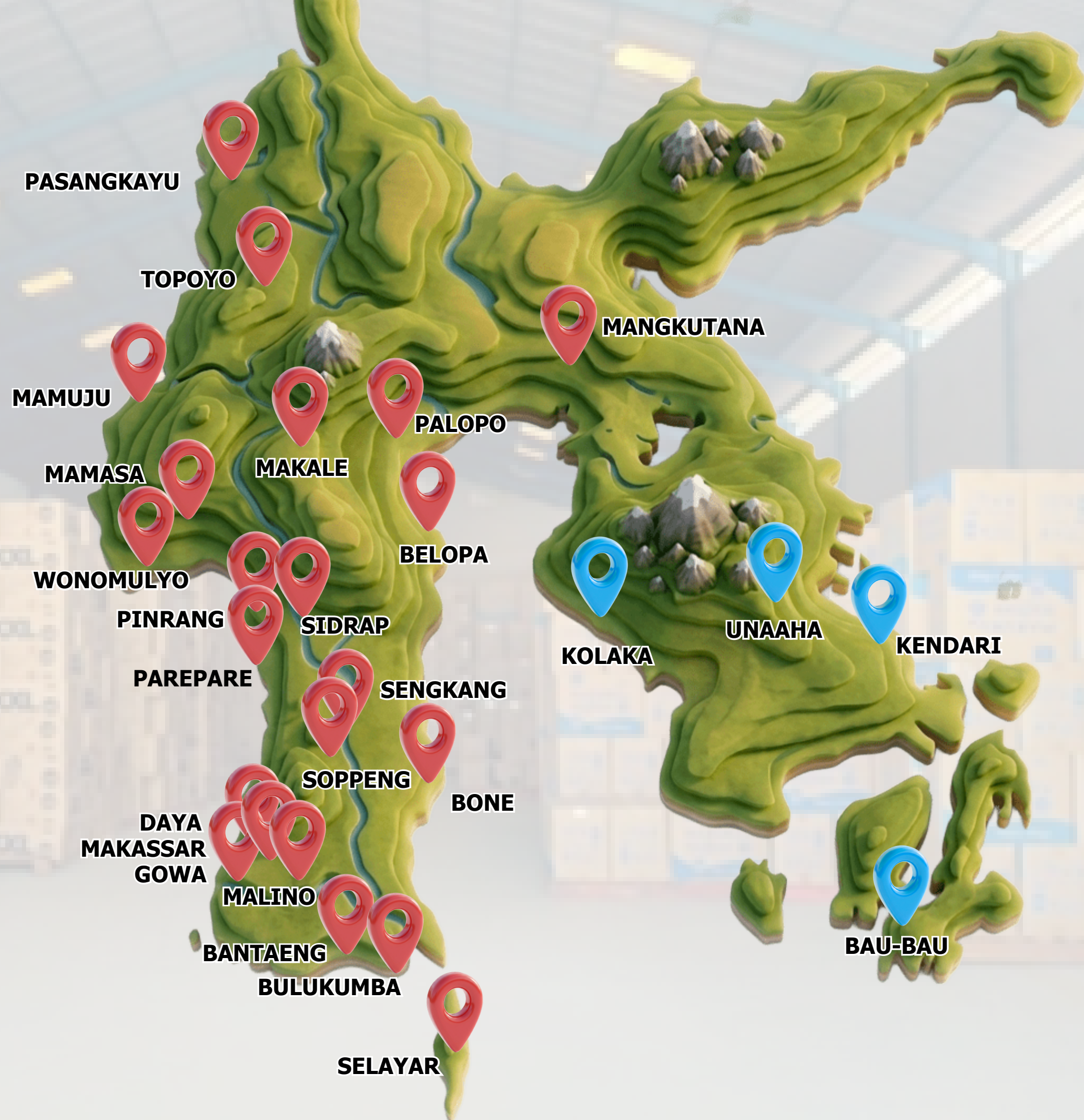


OUR BRANCH LOCATION

PT MAHAMERU MITRA MAKMUR
South and West Sulawesi

PT. MAHAMERU PUTRA HARMONIS
Southeast Sulawesi

Head Office Makassar:
Jl. Sultan Dg. Raja No. 26-28
Kel. Malimongan Baru, Kec. Bontoala,
Kota Makassar 90152,
Prov. Sulawesi Selatan



OUR DISTRIBUTION INFRASTRUCTURE

Description	Details
Warehouse Area	34,450 m2
Delivery Box Vehicles	154 units
Register Outlets	19,077 outlets



OUR DISTRIBUTION INFRASTRUCTURE



No	Lokasi	Wilayah (Provinsi)	Luas Gudang	Armada	Reg. Outlet
1	Makassar	Sulawesi Selatan	12.000 m ²	40 Unit	987
2	Daya		1.200 m ²	7 Unit	494
3	Gowa		2.200 m ²	7 Unit	1.220
4	Malino		100 m ²	2 Unit	249
5	Bantaeng		850 m ²	5 Unit	973
6	Bulukumba		1.200 m ²	6 Unit	1.694
7	Selayar		600 m ²	3 Unit	241
8	Bone		1.200 m ²	7 Unit	1.304
9	Soppeng		1.200 m ²	5 Unit	1.061
10	Sengkang		1.000 m ²	5 Unit	1.027
11	Belopa		500 m ²	2 Unit	458
12	Palopo		1.200 m ²	4 Unit	704
13	Mangkutana		800 m ²	6 Unit	1,212
14	Makale		1.200 m ²	6 Unit	859
15	Pare-Pare		1.000 m ²	5 Unit	1.012
16	Pinrang		1.200 m ²	4 Unit	810
17	Sidrap		400 m ²	3 Unit	519
18	Wonomulyo	Sulawesi Barat	1.000 m ²	7 Unit	1.025
19	Mamuju		800 m ²	3 Unit	599
20	Pasangkayu		400 m ²	2 Unit	399
21	Topoyo		500 m ²	3 Unit	485
22	Kendari	Sulawesi Tenggara	1.800 m ²	7 Unit	1.230
23	Kolaka		500 m ²	5 Unit	510
24	Bau-Bau		1.200 m ²	8 Unit	490
25	Unaaha <i>(New Branch)</i>		400 m ²	3 Unit	285
TOTAL			34.450 m²	154 Unit	19,847

OUR MODERN TRADE

Trusted by national and regional modern trade partners across Indonesia.



OUR GENERAL TRADE

Extensive general trade coverage reaching urban, rural, and remote areas.



Trusted to distribute products from leading national and international principals.





**MAHAMERU
GROUP**

Email:
info@mahamerugroup.com

Web:
<https://www.mahamerugroup.id/>

Address:
Jl. Sultan Dg Raja No. 26-28
Makassar 90152
Sulawesi Selatan, Indonesia

